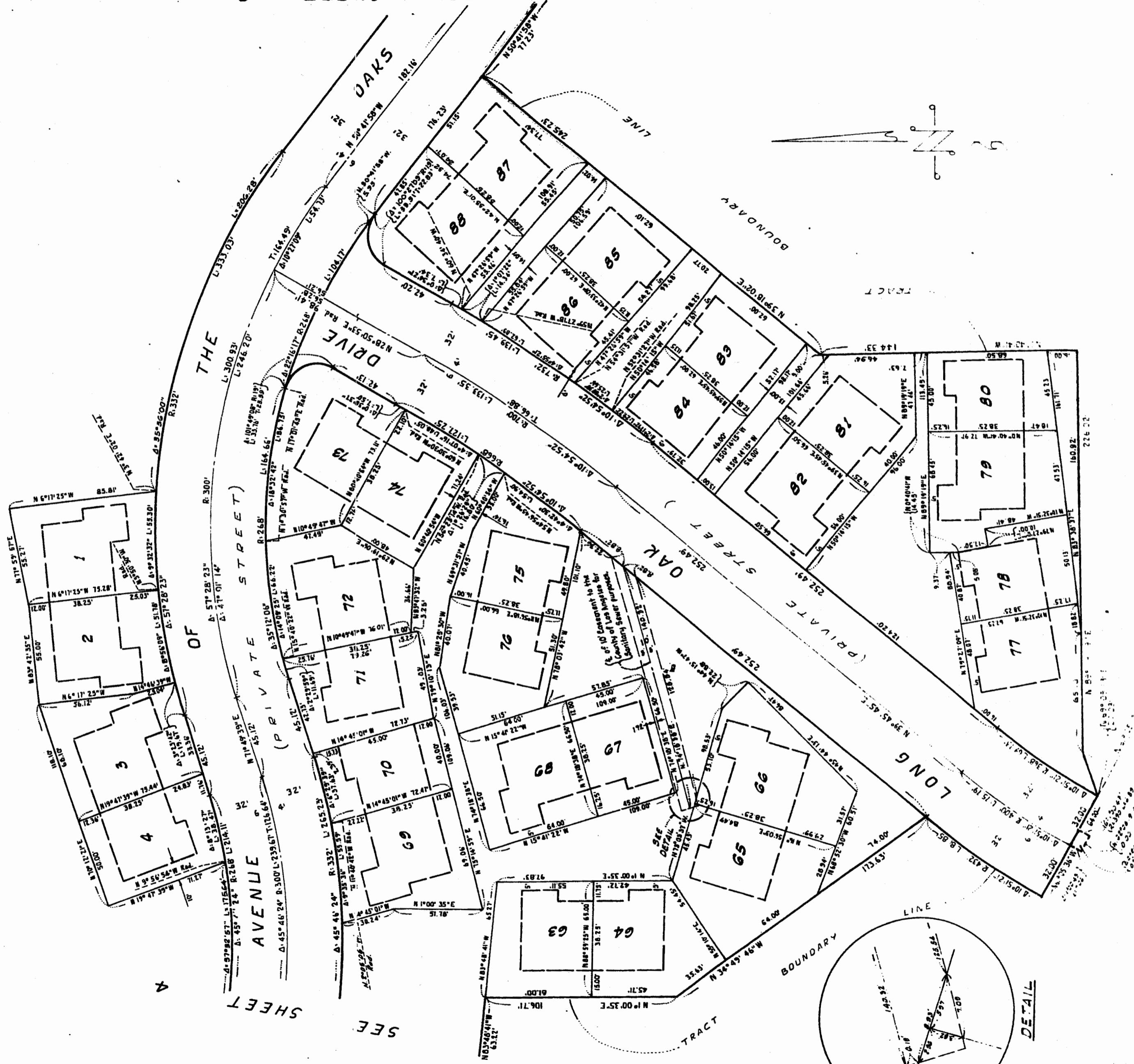


TRACT No. 30701

IN THE UNINCORPORATED TERRITORY OF THE COUNTY OF LOS ANGELES
FOR CONDOMINIUM PURPOSES

FILED WITH LOS ANGELES
COUNTY RECORDER, RAY E. LEI

AUG 26 1968



SEE SHEET 2

SEE SHEET 4

SEE SHEET 1

