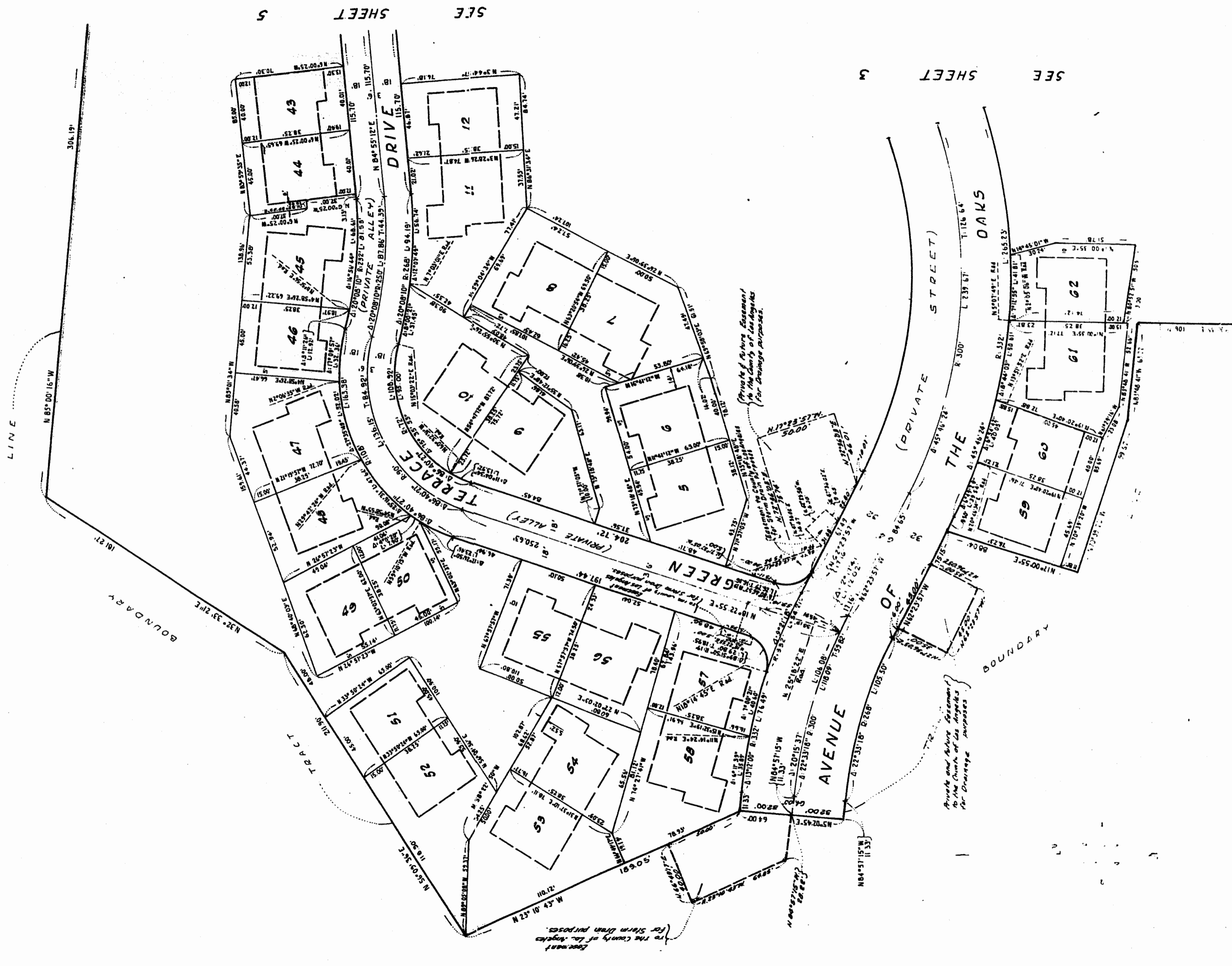


TRACT No. 30701

IN THE UNINCORPORATED TERRITORY OF THE COUNTY OF LOS ANGELES
FOR CONDOMINIUM PURPOSES

FILED WITH LOS ANGELES
COUNTY RECORDER, RAY E. LEE
AUG 26 1959



SHEET 5

SEE SHEET 3