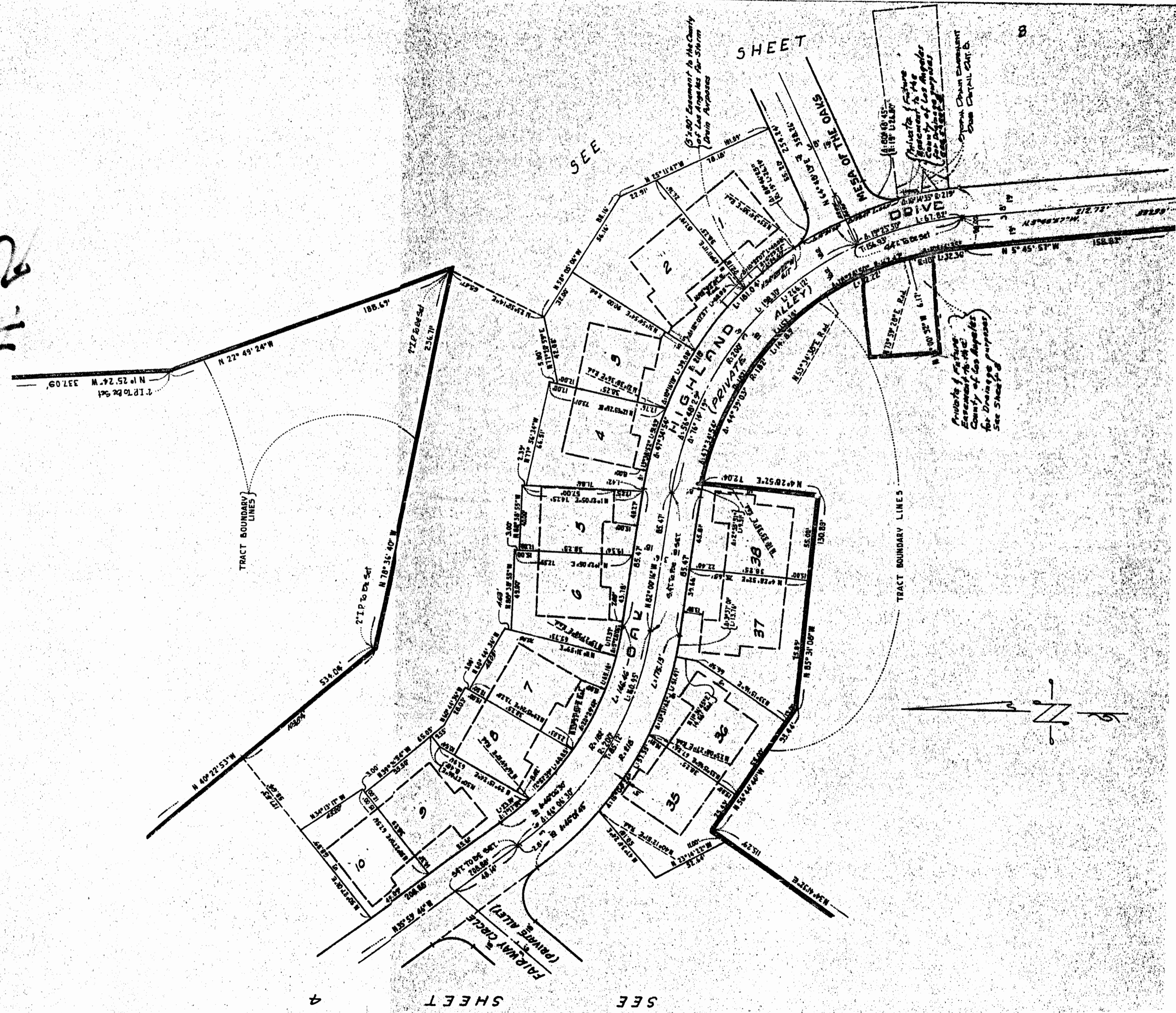


TRACT No. 29546

IN THE UNINCORPORATED TERRITORY OF THE COUNTY OF LOS ANGELES
FOR CONDOMINIUM PURPOSES

FILED WITH LOS ANGELES
COUNTY RECORDER, RAY E. LEE
AUG 14 1980

77.2



4

SHEET

SEE

SHEET

8